

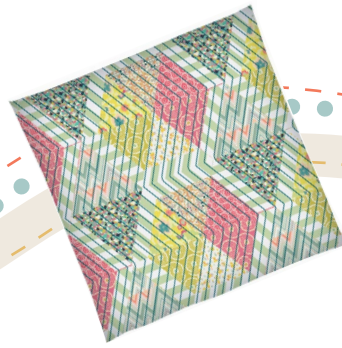
Dreamscape

PILLOW

FREE PROJECT
by PAT BRAVO



Pat Bravo



COLLECTIONS

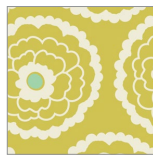
Designed by PAT BRAVO for *Art Gallery* FABRICS



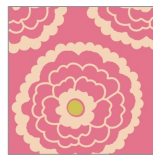
collection



CST-3106
Soho Dandy
Daytime



CST-3104
Girl About
Town Lime



CST-3204
Girl About
Town Rose



CST-3205
Go-Go London
Powdery



PE-412
Tender Green

MATERIALS

- Fabric **A** CST-3106
- Fabric **B** CST-3104
- Fabric **C** CST-3204
- Fabric **D** CST-3205
- Fabric **E** PE-412

CUTTING INSTRUCTIONS

- One (1) 4" x 16" rectangle from fabric **A**
- One (1) 4" x 12" rectangle from fabric **B**
- One (1) 4" x 12" rectangle from fabric **C**
- One (1) 5" x 14" rectangle from fabric **D**
- Six (6) 1" x WOF strip from fabric **E**
- Six (6) 1" x 12" strip from fabric **E**



collection



RPT-1707
Saccharine
Lemon



RPT-1704
Hypnotic
Paramour
Red



RPT-1700
Dreamscape
Sun



RPT-2709
vivacious Marvel
Orange



PE-3205
White Linen

MATERIALS

- Fabric **F** RPT-1700
- Fabric **G** RPT-1704
- Fabric **H** RPT-1707
- Fabric **I** RPT-2709
- Fabric **J** PE-3205

CUTTING INSTRUCTIONS

- One (1) 4" x 16" rectangle from fabric **F**
- One (1) 4" x 16" rectangle from fabric **G**
- One (1) 4" x 12" rectangle from fabric **H**
- One (1) 5" x 14" rectangle from fabric **I**
- Seven (7) 1" x WOF strip from fabric **J**
- Seven (7) 1" x 12" strip from fabric **J**





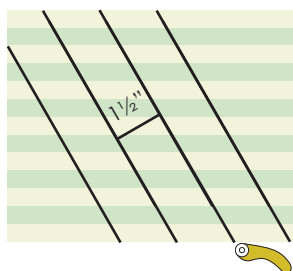
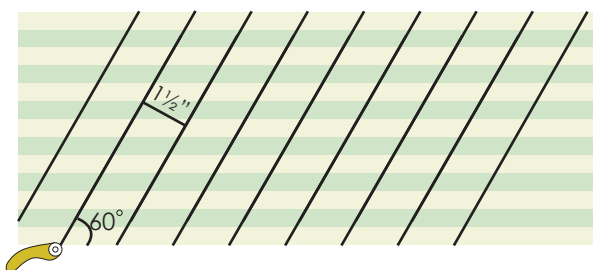
INSTRUCTIONS

Sew all rights sides together with 1/4" seam allowance. Press open.

Step 1. Constructing the strips

- Take the seven 1" x WOF strips from fabric **E** and the six 1" x WOF strips from fabric **J**.
- Start attaching them alternating the two colors.
- Use a ruler to cut 60° angle strips 1 1/2" wide.
- Continue cutting until you have twenty-three strips. (DIAGRAM 1).
- Repeat the previous steps with the 1" x 12" strips of the same colors but this time cut the 60° angle to the other side. This time cut five strips (you should have a total of twenty-eight) strips).

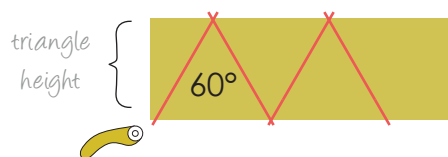
DIAGRAM 1



Step 2. Cutting the triangles

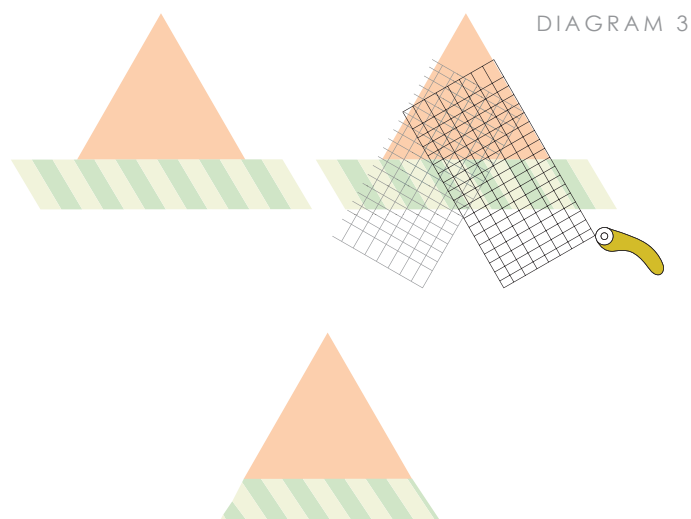
- From fabric **A** and **F** cut six 4" triangles in a 60° angle.
- From fabric **B-C** and **G-H** cut four 4" triangles in a 60° angle.
- From fabric **D** and **I** cut four 5" triangles in a 60° angle. (DIAGRAM 2)

DIAGRAM 2



Step 3. Fishing the triangle

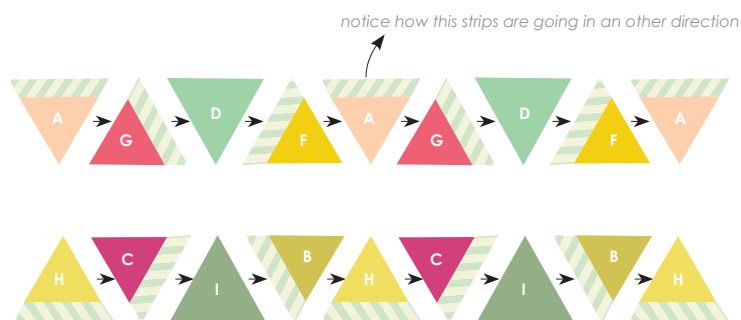
- Attach a strip from Step 1. to one side of each triangle.
- Repeat this with all of the 4" triangles.
- Use the strips that were cut with the 60° angle to the other side for the triangles made with fabric **A**, to create an arrow effect later on (DIAGRAM 3)



Step 4. Start attaching triangles

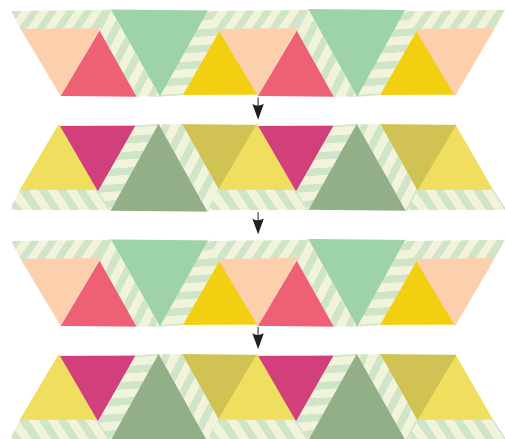
- Follow the cover picture for fabric placement.
- There are two row combinations for this pillow construction (total of 4 rows, repeat each row twice).
- For the first row sew the triangles in the order **AGDF-AGDFA** twice. It is very important to be aware of the position of each triangle (DIAGRAM 4)
- For the second row sew the triangles in the order **HCIB-HCIBH** twice.

DIAGRAM 4



- When you are done with the four rows, sew them together alternating their order (DIAGRAM 5)

DIAGRAM 5



Step 5. Quilting

- For the quilting make a zig-zag stitch every 1/2" (following the pillow patches) (DIAGRAM 6).

DIAGRAM 6



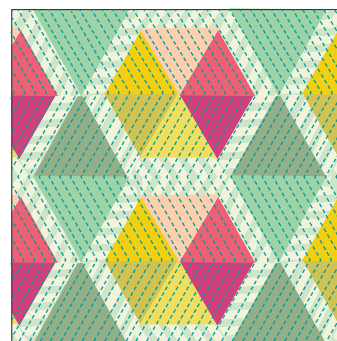
Notice the arrow effect made by attaching the strips going in the opposite direction to fabric **A**

NOTE: While all possible care has been taken to ensure the accuracy of this pattern, we are not responsible for printing errors or the way in which individual work varies. Please read instructions carefully before starting the construction of this quilt. If desired, wash and iron your fabrics before starting to cut.

© 2014 Courtesy of Art Gallery Quilts LLC.
All Rights Reserved.

- Square the top making sure that the hexagons are centered. Your pillow top is ready. (DIAGRAM 7)

DIAGRAM 7



- Cut a square the same size as your top from fabric **A** and place it on top of the finished top, face-to-face.
- Sew all around leaving an opening of at least 4" at the bottom of the pillow to turn it right side out.
- Stuff the pillow and close the opening by hand with an invisible stitch.

