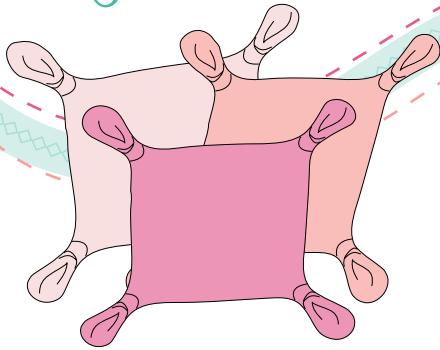


# Flirty Pillows

FREE PROJECT  
by PAT BRAVO



## Featuring FLORAL ELEMENTS COLLECTION



FE-515  
Shocking Pink



FE-502  
Blush



FE-518  
Ballerina

## MATERIALS

- 1 ½ yd of FE-502
- 1 ½ yd of FE-515
- 1 ½ yd of FE-502
- 3 (three) 14" pillow forms

## CUTTING INSTRUCTIONS

FOR EACH 14" PILLOW, cut  
Cut 2 (two) 25" squares of fabric

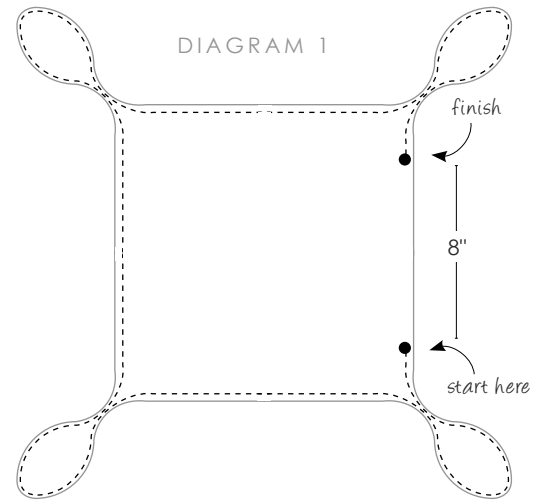
## INSTRUCTIONS

### Step 1. Trace template on fabric

- Fold a 25" square piece of paper in half to make a rectangle. Fold the rectangle again in half lengthwise to make a 12 ½" square.
- Enlarge the template to full size (provided on the last page of the pattern instructions). Cut on the line.
- Align the 90° angle of the paper template with the CENTER of the double folded paper.
- Pin together all paper layers.
- Cut on the line again, following the template. Unfold the paper, revealing the final template.
- Place the final template over the two fabric squares that should be aligned. Pin in place.
- Cut on the edge of paper, following the template.

### Step 2. Construct Pillow

- Grab the two fabric squares (front & back of pillow).
- Matching right sides together, sew all around with a ¼" seam allowance, leaving a 8" opening on one of the sides. (DIAGRAM 1)
- Turn the piece right side out.



### Step 3. Insert the pillow form and close

- Insert the pillow form, making sure the corners are fully tucked in.
- Fold the ¼" seams of the opening into itself. Pin.
- Sew this opening shut by hand using a sewing needle or edge-stitch on your sewing machine (DIAGRAM 2)

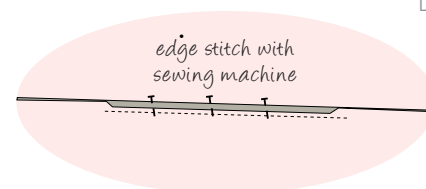
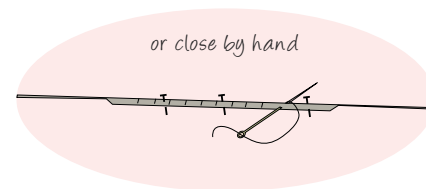


DIAGRAM 2

### Step 4. Make knots

- Make a knot on each corner.

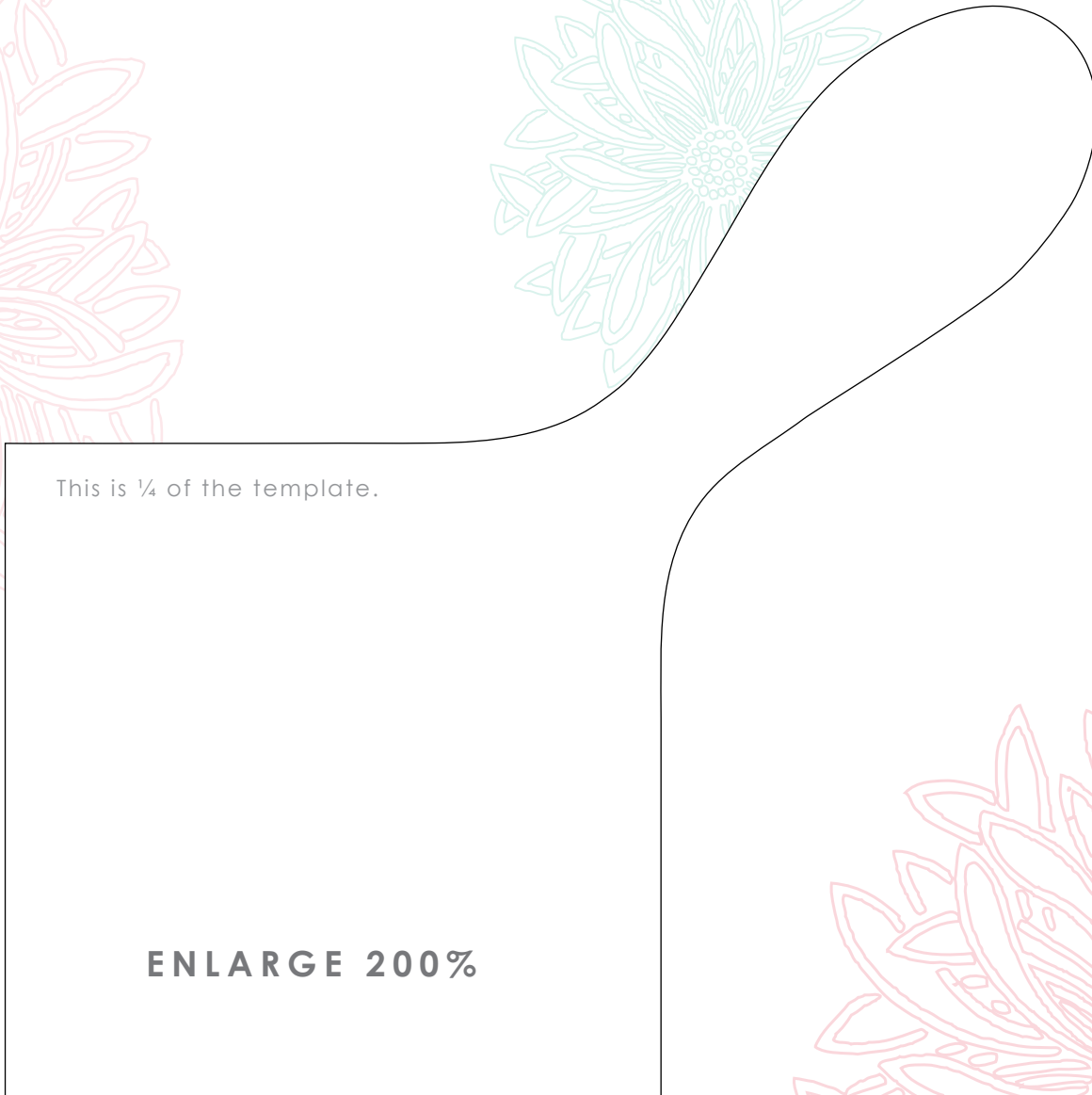
Voila! You just finished one of the pillows, repeat previous steps to make the other 2 pillows... ENJOY!

# Flirty Pillows

TEMPLATE



Pat Bravo



This is  $\frac{1}{4}$  of the template.

**ENLARGE 200%**

align this corner with *center* of  
the double folded paper